



## EUROPEAN SOCIETY FOR MATHEMATICS AND ART NEWSLETTER

Volume 001. Issue 005

JULY 2010

**FOREWORDS    ACTIVITIES    RESOURCE UPDATE    GALLERY**

*Dear Colleagues,*

*Following is a brief overview of ESMA activities for the period May-June , 2010.*

### **Treasury:**

*2010 dues for individual members are 30 €.  
Checks should be sent to: ESMA-Treasury, IHP, 11 rue Pierre et Marie Curie, 75231 Paris, Cedex 05. For wiring and direct transfer: Caisse d'Epargne Ile-de-France (BIC or SWIFT) : CEPFRPP751, IBAN : FR76/1751/5006/000 8/0001/8634/606)*

*ESMA is self financed. Your contribution goes toward publicity, publications, framing, conferences, winter and summer schools and all other activities of the Society.*

### **Exhibition (June 7 – July 25):**

*The exhibit is taking place at the Institute Henri Poincare, 11 rue Pierre et Marie Curie, 75005 Paris. France. Opening hours: Monday – Friday, 9:30 am – 18:00 pm or by appointment.*

*The June 7th's opening reception was well attended. From the "guest book", one comment sums up all the others:*

*"Un seul mot: Magnifique !"*

*A second reception will take place Monday July 19 at 6.30 PM to coincide with the Mathematics and Art conference opening day.*

*The work of 32 artist and scientists from Europe and North America is being shown in the Institute and its library*

*A 120 pages illustrated catalogue including the exhibit review, exhibiting artists portfolio and exhibit photo is now available on the Society web-site and on CD for archiving and higher printing quality. Cost for the CD is \$25/20 € plus shipping. For purchase, information: [info@mathart.eu](mailto:info@mathart.eu)*

*A limited edition of the exhibit poster - format A1 (23 3/8 x 33 inches ) is also available at cost of 35 €.(shipping not included) For information, purchase [info@mathart.eu](mailto:info@mathart.eu)*

### **Conference (19-23 July 2010) :**

*The conference program is now available on the ESMA site: <http://mathart.eu/en/conf10program.html>*

*The conference will take place in the amphitheatre Hermite (max 150 seats). AV equipment available: projectors, microphones, VHS/DVD players whiteboard, overhead transparency projectors LAN & wireless hook up.*

#### CONTENTS

FOREWORDS	P. 1
ACTIVITIES	P. 2
RESOURCE UPDATE	P. 3
GALLERY	P. 3



## **Proceedings :**

The proceedings of the conference will be posted on the ESMA website.

Authors are encouraged to submit a PDF copy of their manuscript to the journal *Symmetry*. Manuscripts can include color graphics, but no multimedia (animation, video, etc.) The Journal's electronic version will include all color graphics provided by the authors. The printed version of the Journal will be in black and white only. (Detailed instructions for submission are available at [www.symmetry.hu](http://www.symmetry.hu))

## **Problems corner**

Excerpt from the IHP exhibit catalogue foreword: "Readers of this catalog are privileged to be among the first to explore the works of pioneers in a distinct mode of artistic expression bound for a significant development that will make the value of these early works priceless. So much so that one can only hope it will advance the momentum toward the creation of a museum dedicated specifically to mathematical arts and mathematics, museum whose absence in today's cultural landscape continues to surprise, confound and startle."...

Remember that the 10 pavillons (folies) of the Arpam project will also welcome exhibits of mathematical works. The design of buildings is an artistic endeavor, and architecture is also included in ESMA larger objective, inasmuch as it is the source of significant geometrical questions.

A few of them will arise from the following interesting colloquium on architecture in Austria: <http://www.architecturalgeometry.at/aag10>

## **Resource Center:**

ESMA encourages you to participate in the development of its Resource Center. Feel free to comment on the existing content and on any particular reference. Send your idea, suggestion, recommendation at [info@mathart.eu](mailto:info@mathart.eu)

The newsletter team is always looking for information, article, topic to share with the membership. Do not hesitate to contact us if at [info@mathart.eu](mailto:info@mathart.eu) if you have some news you think should be share with our readership

With my best wishes  
Claude P. Bruter  
01.06.2010

## **ACTIVITIES**

Posted this month on the ESMA website, activities page. For information, listing of upcoming events: [info@mathart.eu](mailto:info@mathart.eu)

- **On-going:** June 7 - July 25, ESMA Mathematics & Art exhibit. Institut Henri Poincaré. Monday – Friday, 9:30 AM – 18:00 PM or by appointment
- **July 19-22** - ESMA International conference - Mathematics and Art. Institut Henri Poincaré. Paris, FR.
- **July 24** - [Bridges 2010](#) Maths & Art conference. Pécs, Hungary, July 24-28.

ESMA site statistics this month:

Most visited pages: Galleries EN (184), Newsletter (175) Conf-2010 (138)

Members of the mathematical & artistic community linked to ESMA this month:

[IHP JUSSIEUX](#), [IMAGES MATH CNRS FRANCE](#), [SOCIÉTÉ MATHÉMATIQUE DE FRANCE](#)

If interested to link your personal or professional site to ESMA, contact our site administrator for help & advice: [info@mathart.eu](mailto:info@mathart.eu)

## RESOURCE CENTER

Posted this month on the ESMA website, resource center page. For suggestion, recommendation, comment on new posts: [info@mathart.eu](mailto:info@mathart.eu)

**Richard Denner.** Cuboctahedron revelal models.

Quadrature N° 73 DOI 10.1051/2009010

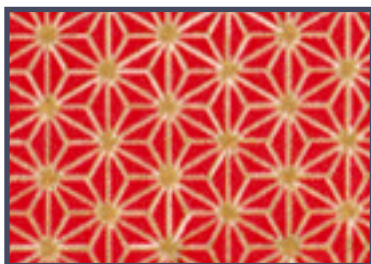
Cuboctahedron revelal models generalization. Illustration by Patrice Jeener. 3D modeling created with the software JavaView.

**Arnaud Cheritat.** Arnaud is a researcher (CNRS) at the Mathématiques Institute of Toulouse, France. Research papers, galleries, animations. [www.math.univ-toulouse.fr/~chartist/](http://www.math.univ-toulouse.fr/~chartist/)

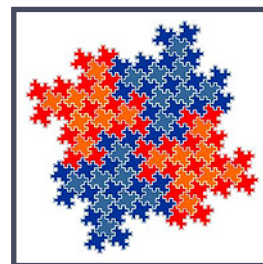
**Andreas Matt** Curator of the imaginary exhibit, an interactive travelling exhibition by the Mathematischen Forschungsinstituts Oberwolfach for the Year of Mathematics 2008 in Germany. Its intention is to display visualizations, interactive installations, virtual realities, 3D objects and their theoretical background in algebraic geometry and in singularity theory in an attracting and understandable manner. <http://www.imaginary-exhibition.com>

## GALLERY

As seen this month on the internet. For suggestion, recommendation, comment on new posts: [info@mathart.eu](mailto:info@mathart.eu)



Mathematics of group theory in traditional Japanese patterns:  
<http://mathmuse.sci.ibaraki.ac.jp/pattn/PatternE.html>



L Art by Slavik Jablan. An L-system is an automaton designed by Aristid Lindenmayer in 1968 to model cell development. <http://vismath.tripod.com/exsl>



